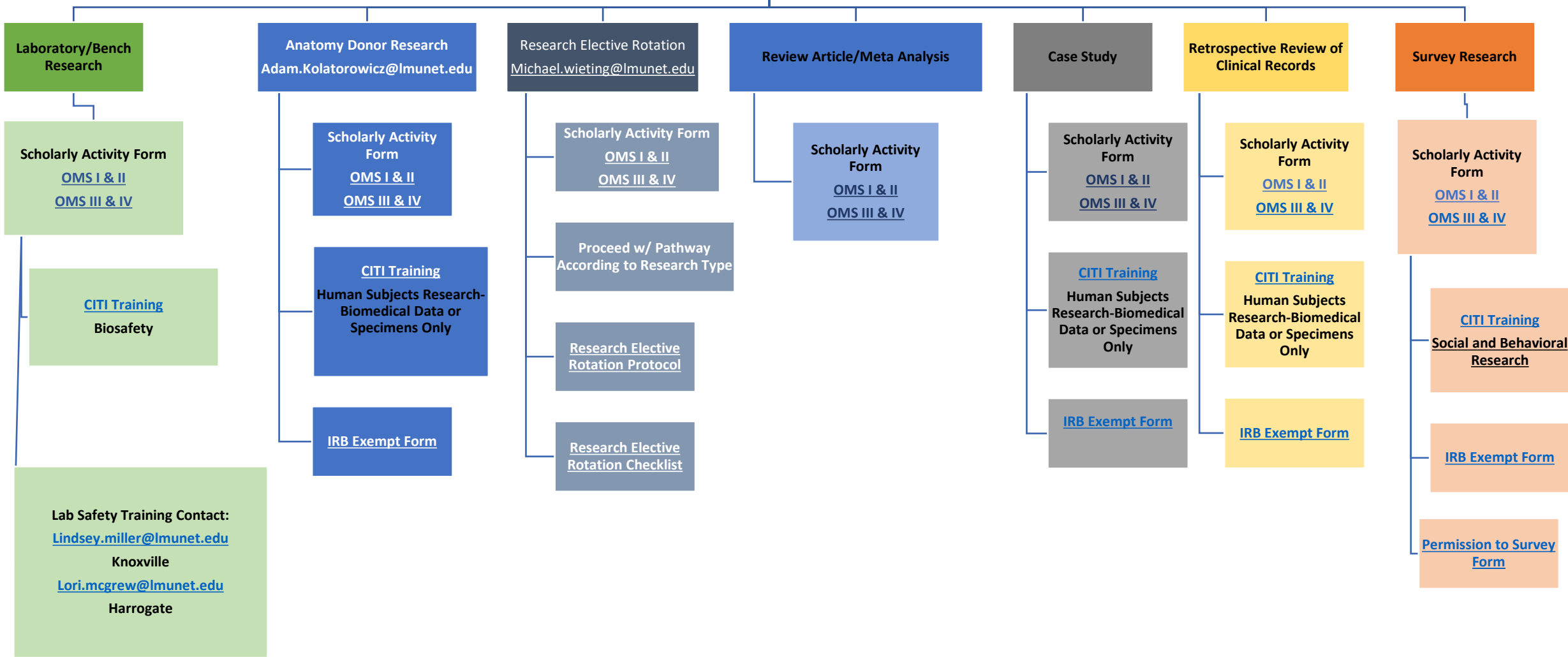


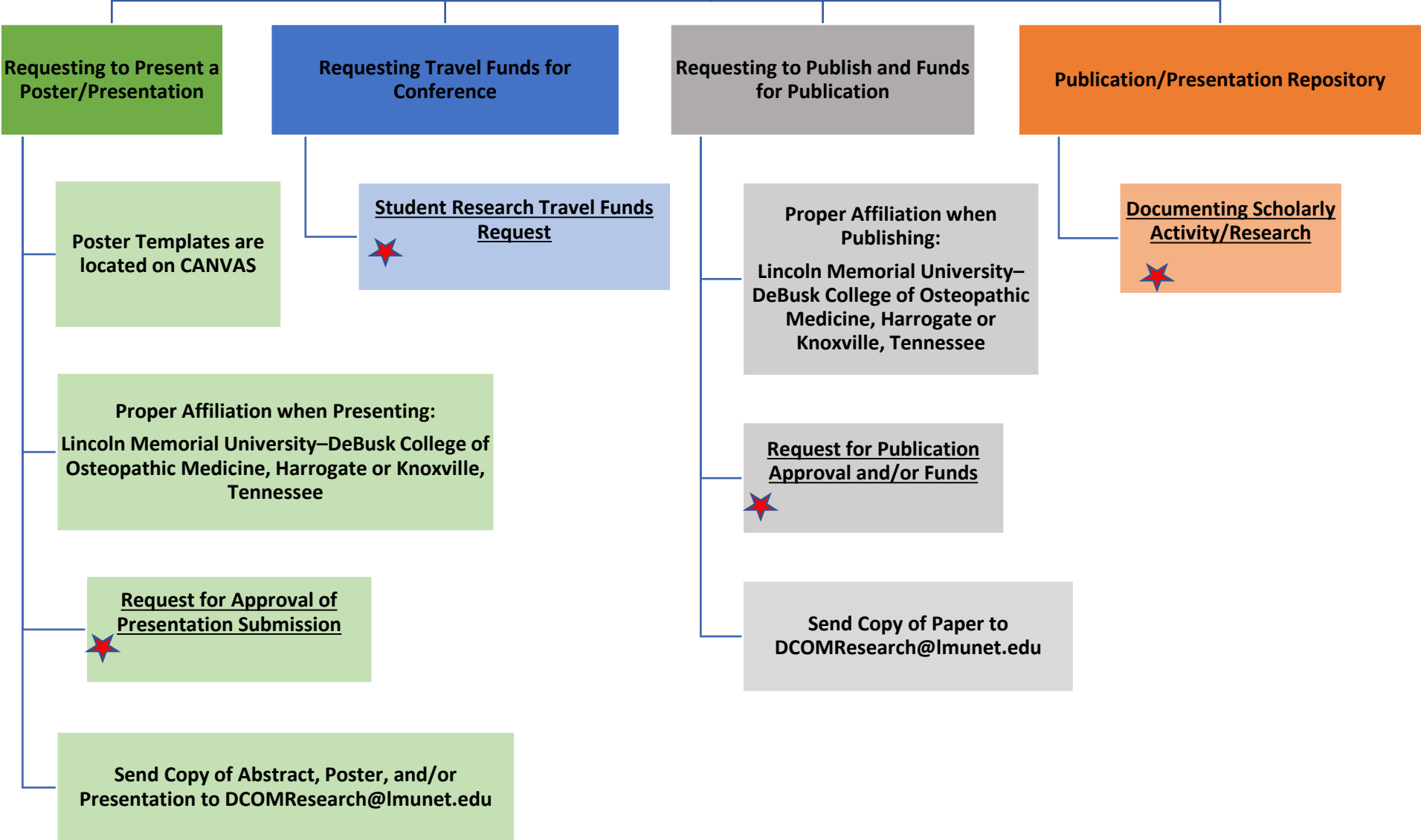
LMU-DCOM Student Scholarly Activity and Research Pathways



**LMU-DCOM Student
Request for Presentation, Travel Funds, and
Publication**

LMU-DCOM Research Website Link

 **Links to required forms**



LMU-DCOM DEPARTMENT OF RESEARCH CONTACT LIST

<p>Natalie Freeman, Ph.D. Assistant Dean of Research natalie.freeman@lmunet.edu 865-338-5737</p>
<p>Amanda McCoy RT(R)(CT)CNMT MPH Research Coordinator amanda.mccoy@lmunet.edu 865-338-5752</p>
<p>Carolyn Gulley, M.Ed. Director of Health Sciences Research and Grants carolyn.gulley@lmunet.edu 423-869-6258</p>
<p>J. Michael Wieting, D.O. Sr. Associate Dean, Rotation Chair for Research Elective (OMS III and IV) michael.wieting@lmunet.edu 423-869-7148</p>

Harrogate Campus

Knoxville Campus

<p>Dr. Lori McGrew, PhD Director of Research Harrogate Chair of LMU IRB lori.mcgrew@lmunet.edu 423-869-6613</p>
<p>Siara Minton-Lab Manager siara.minton@lmunet.edu</p>
<p>TBD-Lab Manager</p>

LMU-DCOM Website Link
DCOMresearch@lmunet.edu

<p>Dr. Lindsey Miller, PhD Director of Research Knoxville Chair of Research and Grants Committee lindsey.miller@lmunet.edu 865-338-5720</p>
<p>Joey Headrick – Lab Manager joseph.headrick@lmunet.edu</p>
<p>Helen Sowder – Lab Manager helen.sowder@lmunet.edu</p>